

Social Integration MA

www.elte.hu/en/social-integration-ma

Faculty of Education and
Psychology

Eötvös Loránd University (ELTE)
Budapest, Hungary

Language of instruction:

English

Duration:

2 years

Program starts:

in September

Accreditation number:

OH-FHF/1470-4/2009

ECTS credits:

120

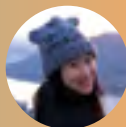
Limit:

2-150 students

"Within the classes, plenty of international students from various cultural backgrounds work together. To be honest, I can't even express how much I appreciate having them around me."



Wenxin Zhou
China



Multi/intercultural issues have become increasingly significant in political, social, cultural and everyday life. This is due to processes related to globalization, to continuous social changes and to the changing cultural and educational scene. **Cultural awareness** has thus become an essential part of professionals in many fields and it is truly indispensable in community work and education. To meet the need for experts in these fields, the Institute of Intercultural Psychology and Education (IIPE) at the Faculty of Education and Psychology ELTE launched its first MA Program of Intercultural Psychology and Education (4 semesters, 120 credits) in 2009. Since September 2013, the program has been offered in English to students from various regions of the world.

The program provides students with knowledge about the **multifaceted nature of intercultural** issues and multi/interculturalism by means of a multidisciplinary approach, which includes anthropology, sociology, psychology, and education. The program is theory-based and practice-oriented at the same time. Courses are based on latest research in relevant fields, and students are given opportunities to test and apply their theoretical knowledge in practical situations.

Approximately half of the program consists of **trainings, seminars, and field work**. The program prepares students to understand and effectively work with culturally diverse populations in different institutions and in different settings, ranging from small communities to multinational corporations. With their sound knowledge and competences in intercultural psychology and education, graduates of the program will be able to consciously treat the diversity of values in different societies, helping to promote social equity, human rights, social integration and cooperation of different minority and majority groups.

Strength of program:

The program, which is one of the few of its kind in Europe, is strongly committed to interdisciplinary studies with a **focus on psychological and educational issues**. Focusing on the human dimensions of intercultural issues and interactions and also giving ample consideration to their global context, the program distinguishes macro-historical, macro-political and **macro-sociological approaches**.

Your application:

Application deadline: Period 1: 25 February
Period 2: 25 March
Period 3: 25 April
Period 4: 27 May
Period 5: 15 July

Tuition fee/semester: 2,900 EUR


Application fee: 120 EUR

Registration fee/semester: 120 EUR

Please consult the website for the most recent information:

www.elte.hu/en/social-integration-ma

General information:

 iro@elte.hu

 www.facebook.com/elteinternational

 www.youtube.com/user/ELTEfilm

 [elteinternational](https://soundcloud.com/elteinternational)

(available: every Friday 10:00-12:00 a.m. CET)

Download brochures: www.elte.hu/en/brochures

Find your degree program:

www.elte.hu/en/find-degree-program

Meet our students: www.elte.hu/en/meet-our-students

Visit us: www.elte.hu/en/visit-us

Career prospects:

Graduates will be able to understand the characteristics of intercultural relations and communication and co-ordinate the work of people from different cultures effectively in various fields both at national and international level in **public administration, minority self-government, minority and mainstream media**, schools as well as other formal and informal **educational institutions, multi-national and civil organizations**. After receiving an MA degree, students may apply to continue their studies in our PhD program.

Job examples:

social integration counsellor

Other degree programs at the Faculty of Education and Psychology, ELTE:

→ Psychology BA

→ Psychology MA

→ Computational and Cognitive Neuroscience MSc

→ Doctoral School of Education

→ Doctoral School of Psychology

Program Leader:

Nguyen Luu Lan Anh, Head of Institute

Program Coordinator:

International Admission Coordinator

E-mail: admission@ppk.elte.hu

TEL: 36 1 461 4500 / 3474

Address: ELTE Faculty of Education and Psychology
H-1064 Budapest, Izabella utca 46

Information in this leaflet is correct at the time of the publication. For the most up-to-date information, please consult the website at www.elte.hu/en/find-degree-program.

Editors: International Office, Rector's Cabinet, Eötvös Loránd University
Graphic design: Communications Office, Rector's Cabinet, Eötvös Loránd University